

DIMENSIONAL INFORMATION



1 OF 4

-PERFORMANCE AREA- (See Drawings: D1 and D2)

Proscenium Width:	46 Feet
Proscenium Height:	20 Feet
Overall Stage Width:	106 Feet
Stage Depth:	
Apron Nose to Back Wall:	59 Feet
Curtain Line to Back Wall:	43 Feet
Stage to Grid Height:	42 Feet

APRON

Width:	46 Feet
Depth (Plaster Line to Nose):	16 Feet

ORCHESTRA PIT

Dimension (maximum):	12' x 34'
Operation:	Manual
Flooring:	The pit floor has been tiered to improve conductor sight lines to the stage area. Tier 1 is 6'-8" below stage level; Tier 2 is 7'-8" below stage level.

NOTE: Civic Hall does not have a hydraulically operated pit lift; therefore, a request to lower the pit cover requires a minimum of three weeks notice. Also, the user group is responsible for labor expense incurred in the lowering of the pit cover and its return to stage level following the event.

WING AREA

Stage-Right and Left:	30' x 43'
Clear Space Height:	
Stage-Right:	Variable from 18 to 42 feet
Stage-Left:	42 Feet

-MAIN BEAM / CAT WALK- (See Drawing: D2)

Length:	80 Feet
Width:	4 Feet
Height Above Stage Floor:	29 Feet
Beam to Stage Opening:	34 Feet

-ORCHESTRA SHELL-

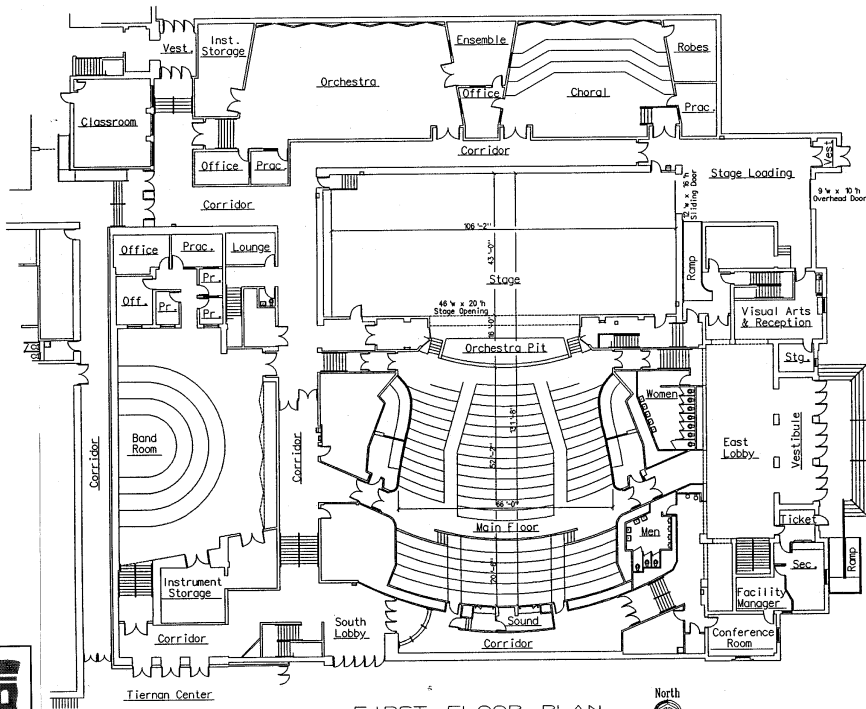
(For Standard Placement, Options, and Sizing, See Drawing: D3)

DRAWING # D1

2 OF 4

DIMENSIONAL
INFORMATION:

FIRST FLOOR
PLAN



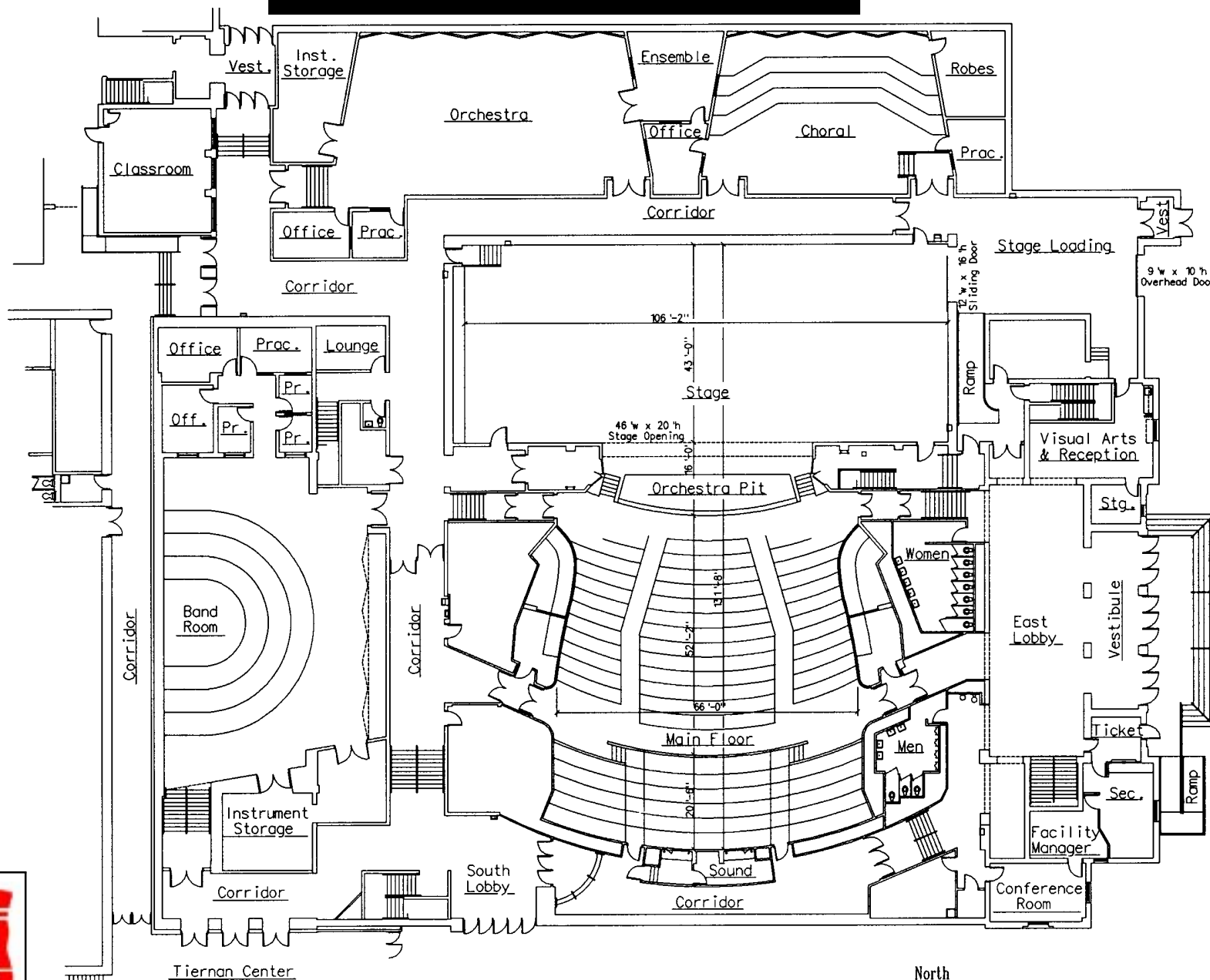
FIRST FLOOR PLAN



DRAWING # D1

DIMENSIONAL INFORMATION:

FIRST FLOOR PLAN



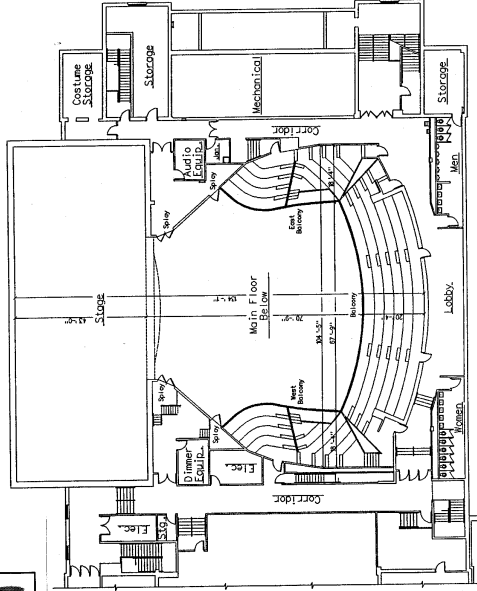
FIRST FLOOR PLAN



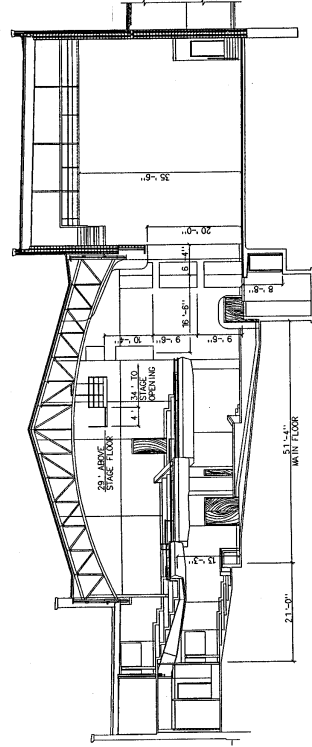
DRAWING # D1

DIMENSIONAL INFORMATION:

SECOND FLOOR PLAN AND SECTION VIEW



SECOND FLOOR PLAN

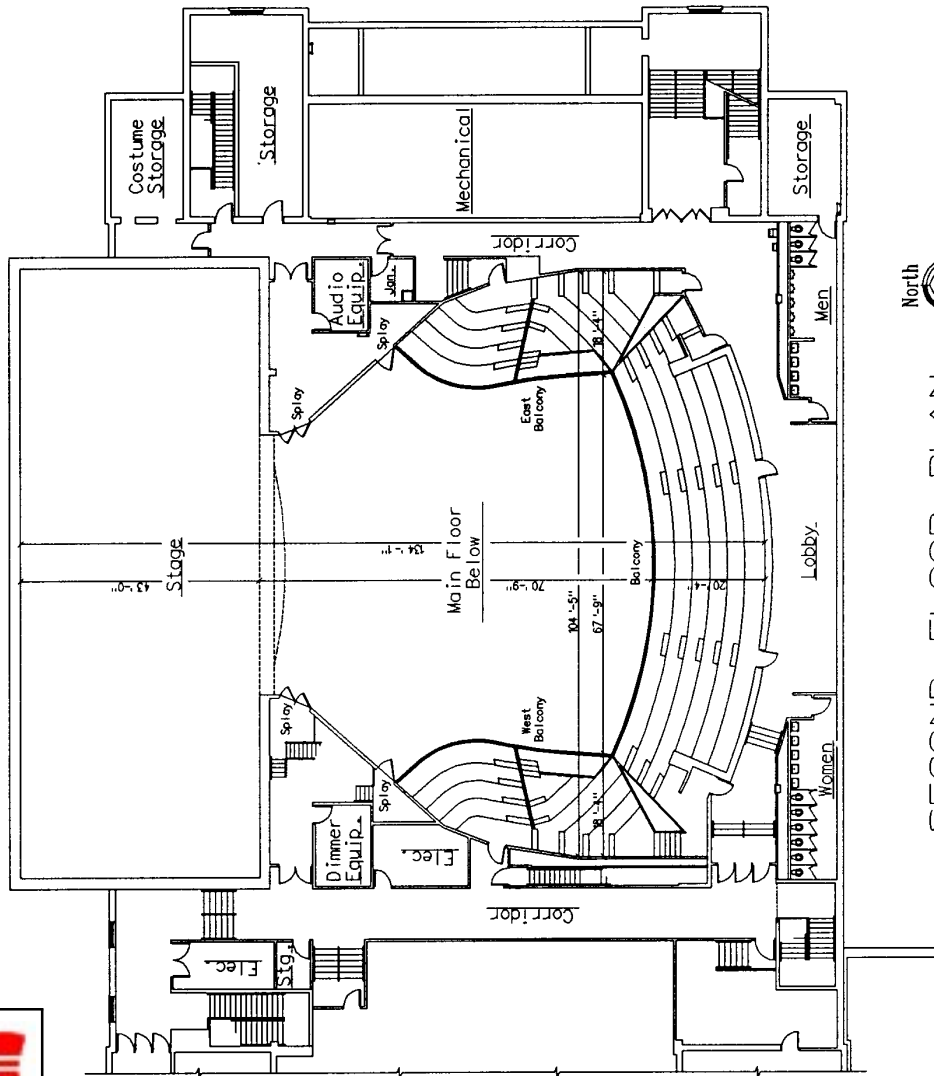


SECTION

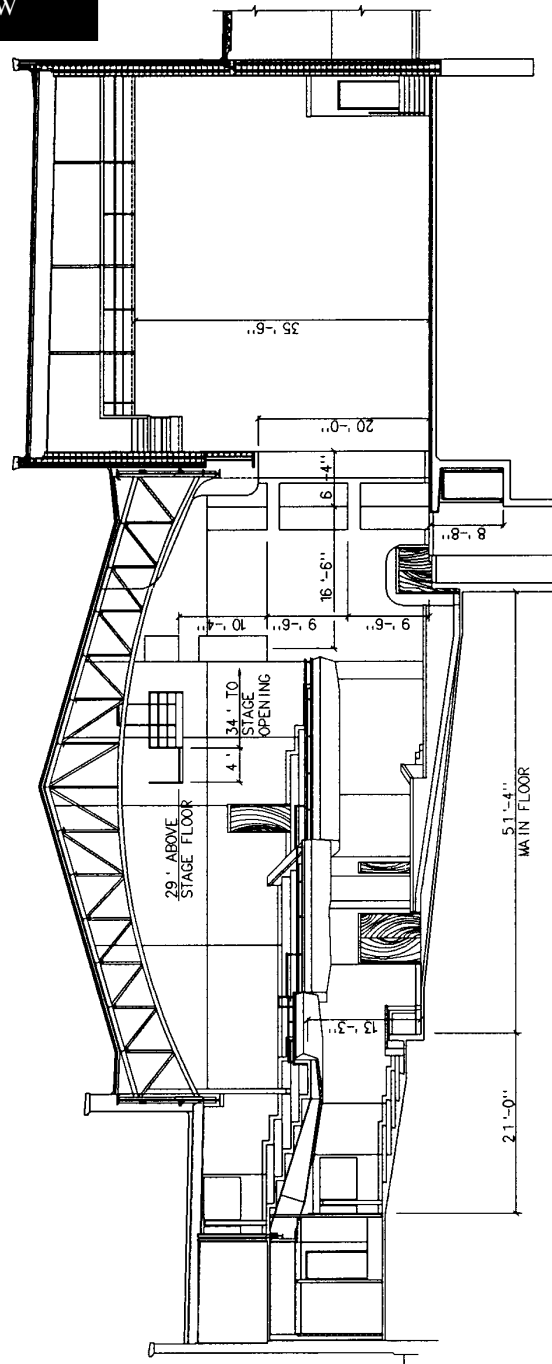


DIMENSIONAL INFORMATION:

SECOND FLOOR PLAN AND SECTION VIEW



SECOND FLOOR PLAN North

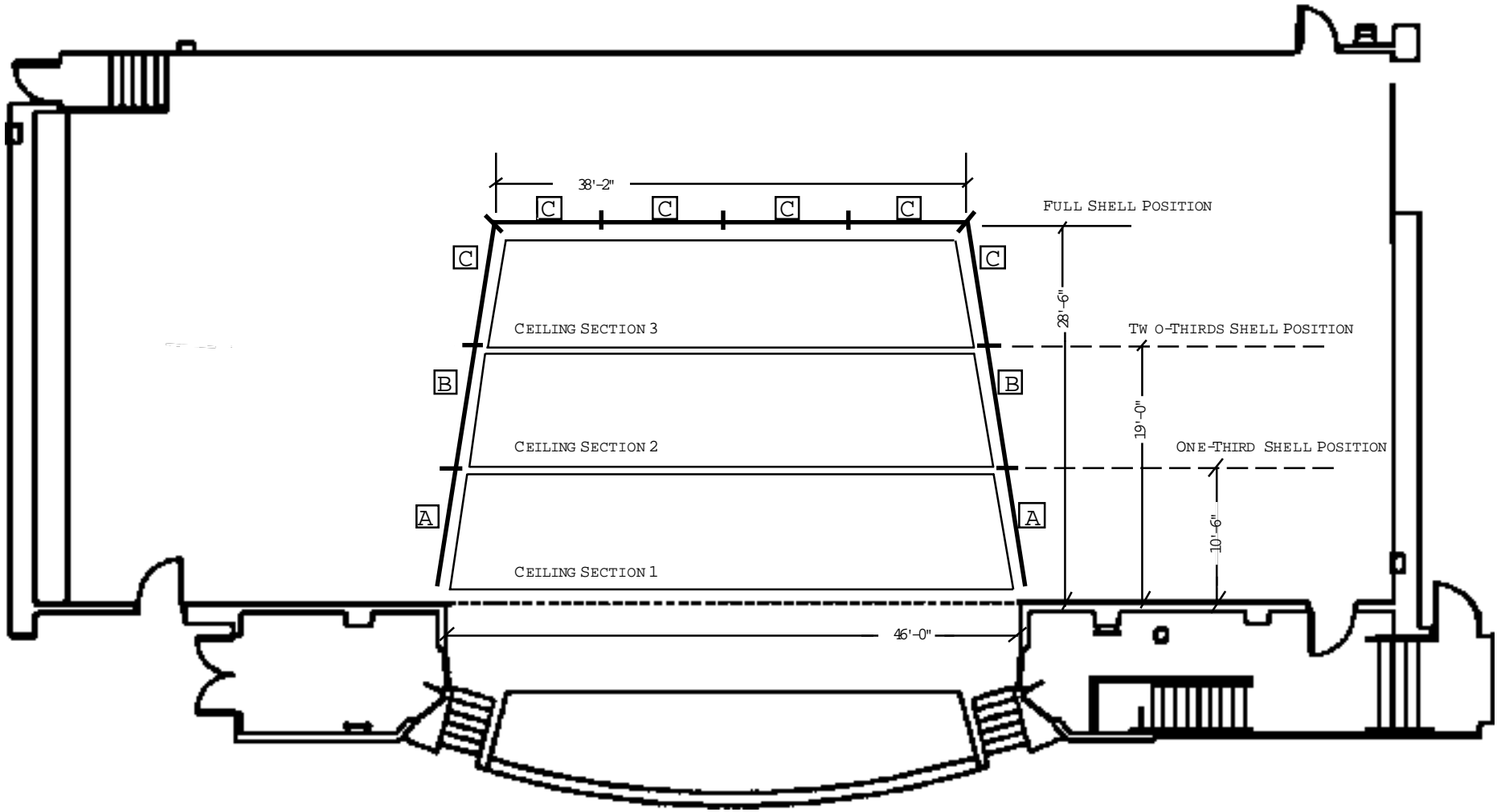


SECTION



DIMENSIONAL
INFORMATION:

ORCHESTRA
SHELL



DRAWING # D3

KEY:

- A 21' SIDE PANEL
- B 19' SIDE PANEL
- C 17' SIDE PANEL